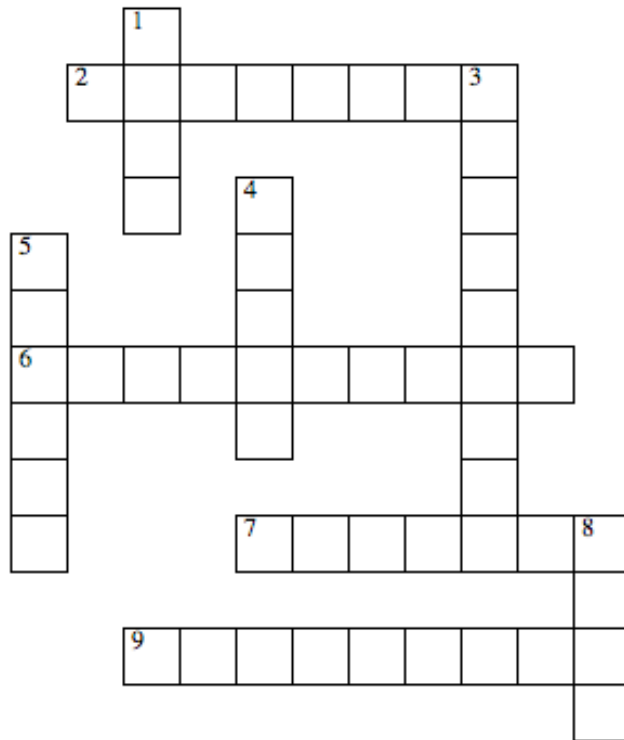
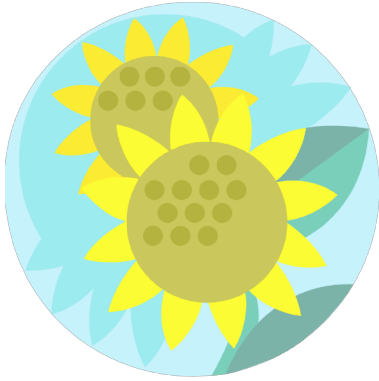


# Plants



## Plant Vocabulary

- life cycle
- flowers
- seed
- leaves
- roots

- germinate
- stem
- seedling
- adult plant

### ACROSS

**2** A young plant with only a few leaves and no flowers.  
\_\_\_\_\_

**6** A plant that can make flowers and fruit.  
\_\_\_\_\_

**7** The parts of the plant that makes seeds and turns into fruit.  
\_\_\_\_\_

**9** How a living thing grows and changes.  
\_\_\_\_\_

### DOWN

**1** Part of a plant that can grow into a new plant.  
\_\_\_\_\_

**3** To start to grow from a seed.  
\_\_\_\_\_

**4** The part that holds the plant into the soil and takes in water and nutrients.  
\_\_\_\_\_

**5** The part of the plant that takes in sunlight to make food and helps the plant take air in and out.  
\_\_\_\_\_

**8** The part that supports the plant and carries water and nutrients to the rest of the plant.  
\_\_\_\_\_