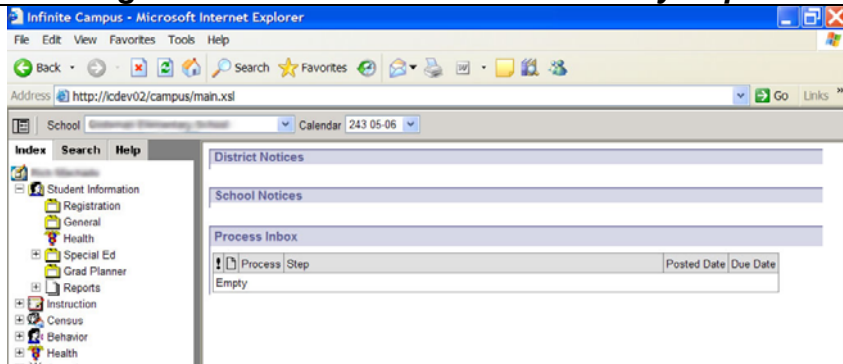
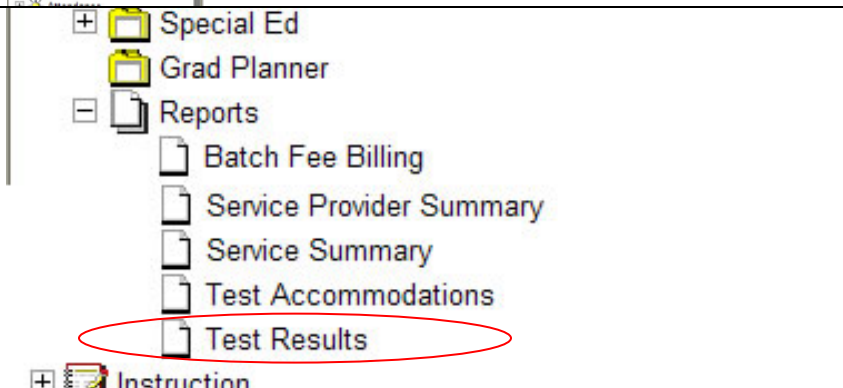


Window
Information

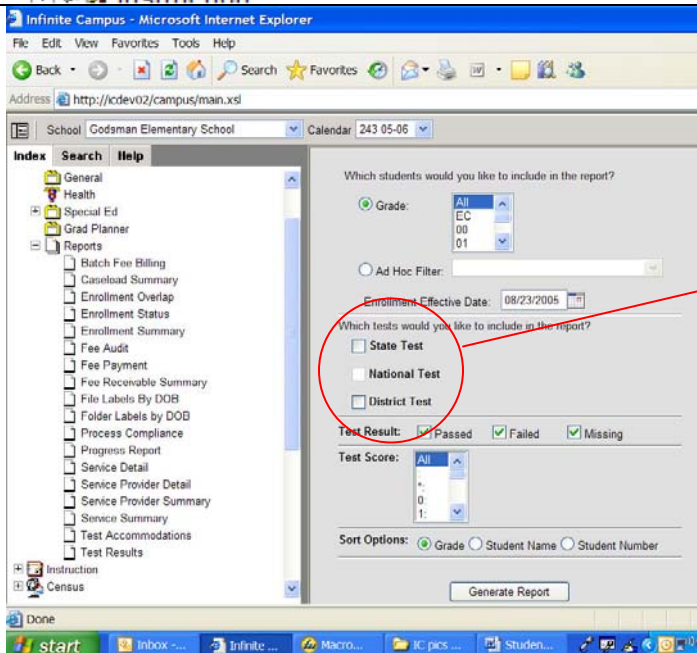
Creating the Student Assessment Summary Report



1. From the **Index**, expand the **Student Information** folder by clicking on the plus (+) sign.
2. Expand the **Reports** folder by clicking on the plus (+) sign.

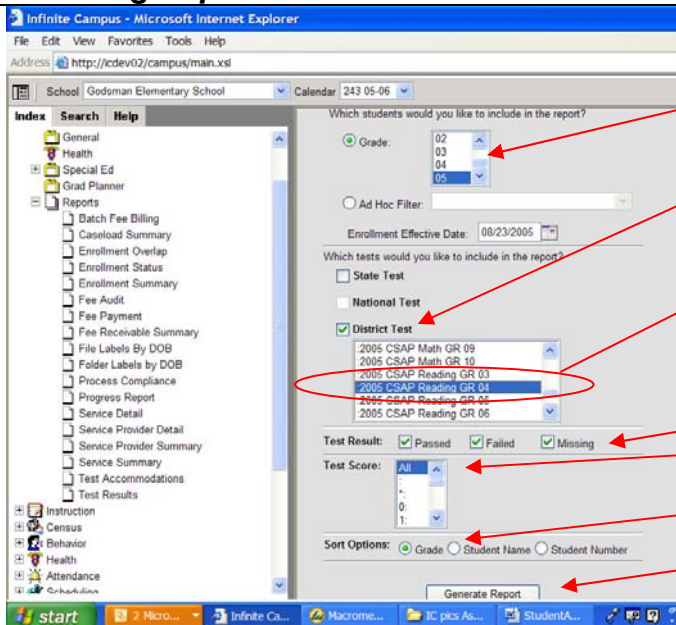


A list of reports will be presented once the **Report** folder has been expanded. Select the **Report** titled: **Test Results**.

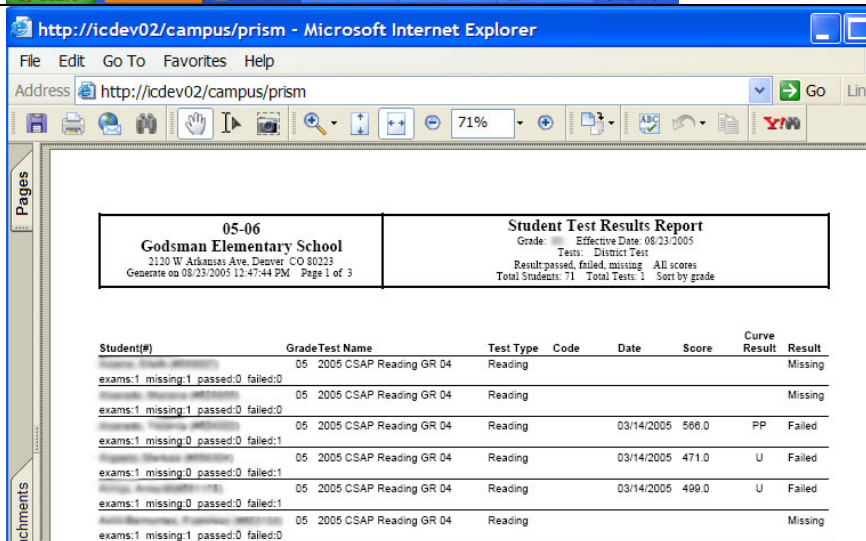


Infinite Campus provides three test categories: State, National, and **District**. Currently, the only category loaded with assessment information is the **District** category. Select District by using your mouse to click on the check box next to the words **District Test**.

Selecting Report Filter Parameters



1. Select a specific grade or all grades you are interested in reporting on.
2. Click on the check box next to the category **District Test**.
3. A list of Assessments is presented in list box.
4. Select one or more Assessments from the list box. (To select multiple assessments on a Window machine press and hold the Control Key (Ctrl) while clicking the left mouse button. On a Macintosh press and hold the Option Key while clicking the mouse.)
5. Leave all Test Result check boxes checked (Passed, Failed, and Missing).
6. Leave **All** selected in the Test Score list box.
7. Select the sort option you prefer: **Grade** (default), Student Name, or Student Number.
8. Click on the **Generate Report** button to create an Adobe PDF report document.



Student(#)	Grade	Test Name	Test Type	Code	Date	Score	Curve Result	Result
exams:1 missing:1 passed:0 failed:0	05	2005 CSAP Reading GR 04	Reading					Missing
exams:1 missing:1 passed:0 failed:0	05	2005 CSAP Reading GR 04	Reading					Missing
exams:1 missing:0 passed:0 failed:1	05	2005 CSAP Reading GR 04	Reading		03/14/2005	566.0	PP	Failed
exams:1 missing:0 passed:0 failed:1	05	2005 CSAP Reading GR 04	Reading		03/14/2005	471.0	U	Failed
exams:1 missing:0 passed:0 failed:1	05	2005 CSAP Reading GR 04	Reading		03/14/2005	499.0	U	Failed
exams:1 missing:1 passed:0 failed:0	05	2005 CSAP Reading GR 04	Reading					Missing

All Infinite Campus reports have general information listed in the top left portion of the header (school year, school, address, date generated, sort option, etc.). The right hand side of the header lists the specific report, grade, date, and total number of students reported. In the detail section students will be listed according to the sort option. Within each student's section all the selected Assessments will be listed (in this example only one assessment – 2005 CSAP Reading GR 04 – was selected). Additional information listed includes the Date, Score, Curve Result, and Result.

Student Assessment Summary Report Columns

Date – This lists the date of the assessment period.

Score – This is a numeric column used if an assessment has a numeric (e.g., raw or scaled) score.

Curve Result – This is an alpha/numeric column used if an assessment has a range of scores that include Alpha and Numeric results (eg. QRI – MS result), or if an assessment has some sort of rubric score (eg. CSAP proficiency levels).

Result – This column should be ignored at this time. Infinite Campus provides an option when setting up assessments to automatically determine if a Curve Result is a passing result or not. This is geared more for classroom assessments. This functionality is not being used currently in the assessment definitions; therefore because a score is available, and no results are defined as passing, the default result parameter is Failed. A student that has no test score has a result of Missing. The district is working with Infinite Campus on possible alternatives for this column.